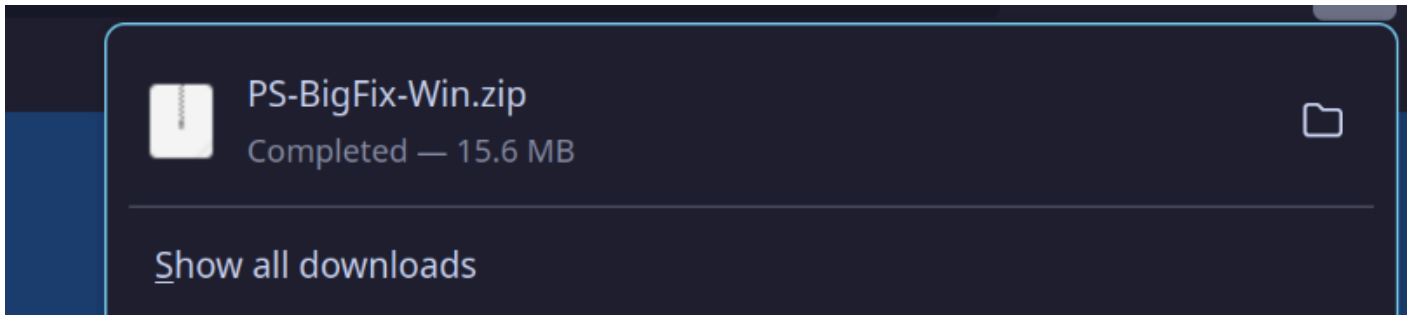


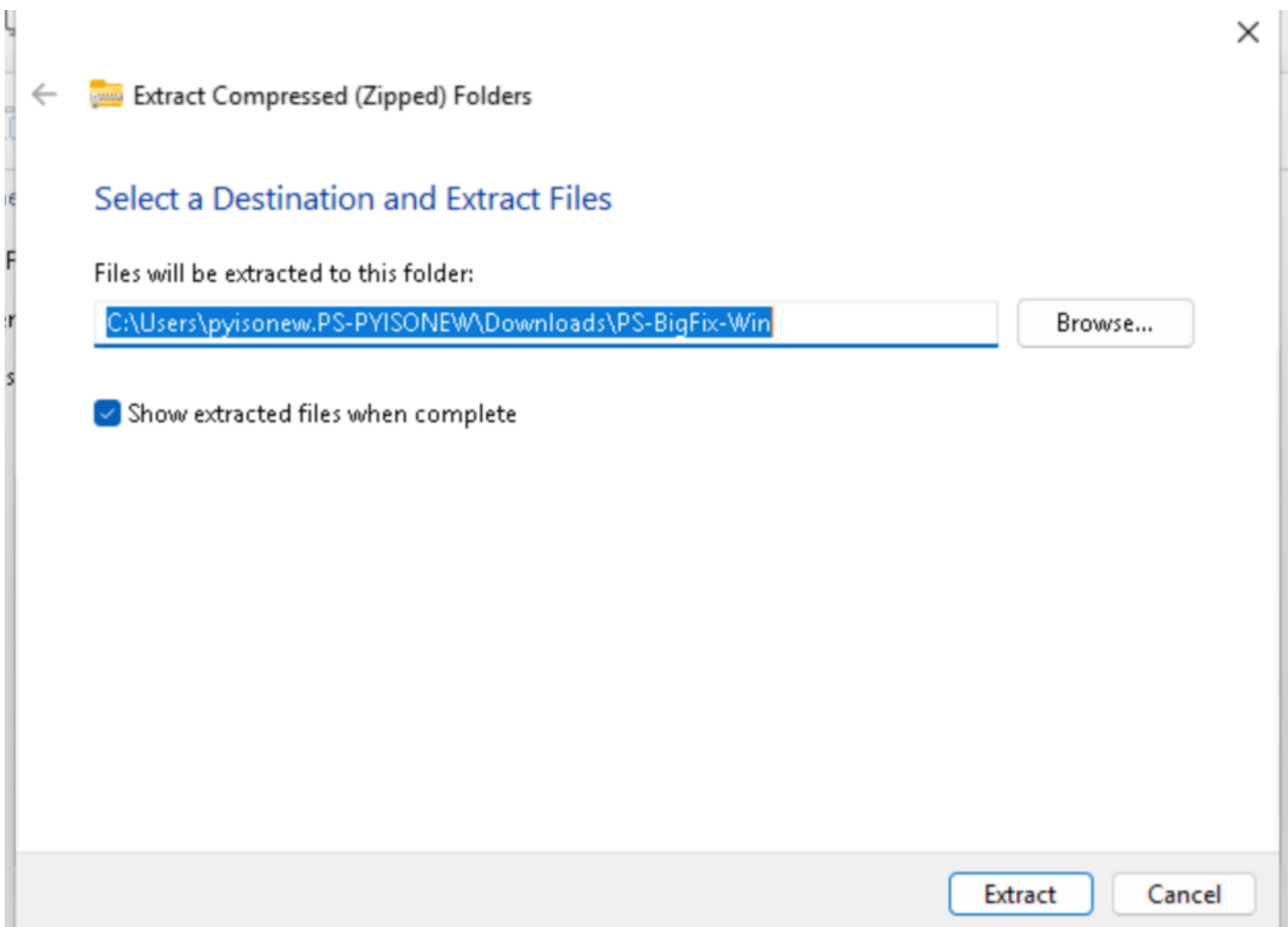
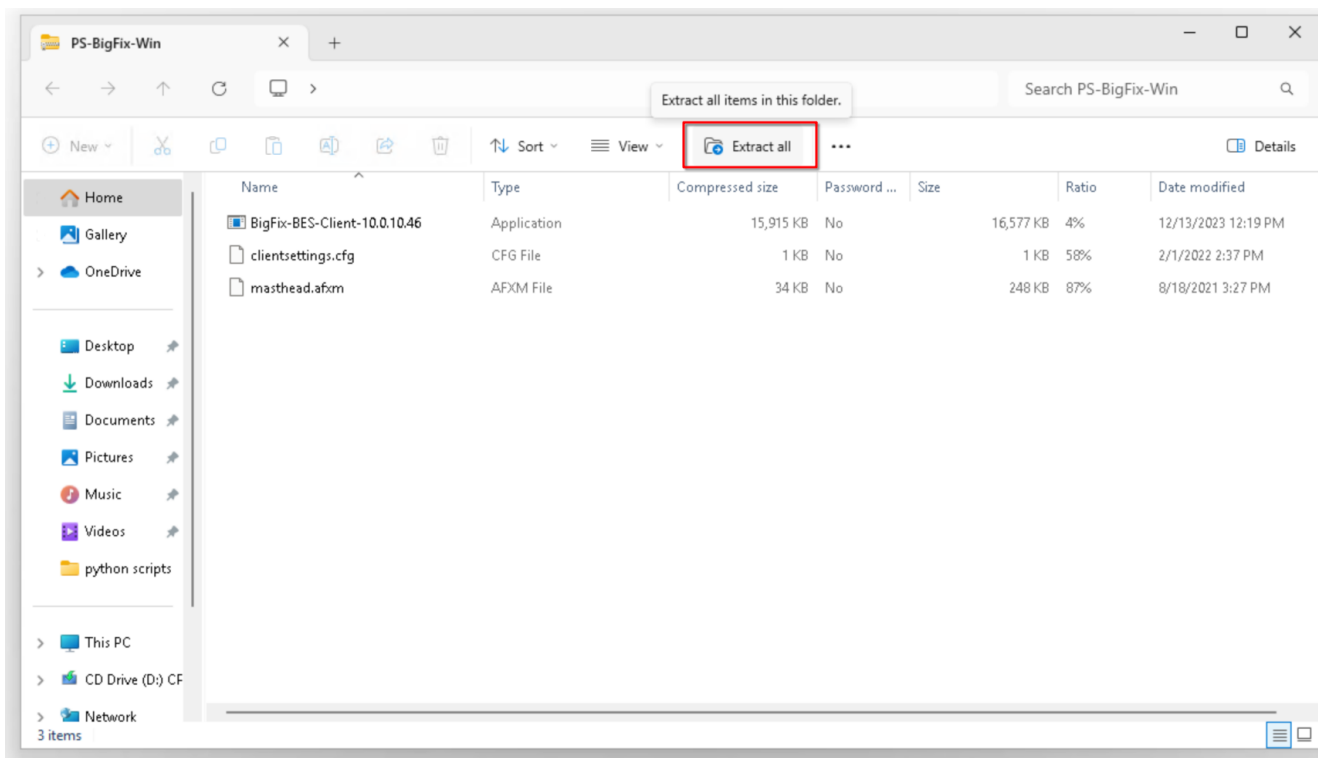
ZotDefend Windows Instructions

This page contains instructions to install software to ensure a Windows computer is UCI ZotDefend compliant. School of Physical Sciences ONLY

1. Install BigFix (Instructions below)

<https://tools.ps.uci.edu/downloads/download/PS-BigFix-Win.zip>





PS-BigFix-Win

← → ↑ ↻ 🖨 > Downloads > PS-BigFix-Win

Search PS-BigFix-Win 🔍

➕ New ▾ ✂ 📄 📁 📄 📄 🗑

⬆ Sort ▾ ≡ View ▾ ⋮

📄 Details

Home

Gallery

> OneDrive

Desktop 📁

Downloads 📁

Documents 📁

Pictures 📁

Music 📁

Videos 📁

python scripts 📁

This PC

> CD Drive (D:) CF

> Network

3 items | 1 item selected 16.1 MB

Name	Date modified	Type	Size
▼ Today			
📄 BigFix-BES-Client-10.0.10.46	4/8/2025 9:59 AM	Application	16,577 KB
📄 clientsettings.cfg	4/8/2025 9:59 AM	CFG File	1 KB
📄 masthead.afxm	4/8/2025 9:59 AM	AFXM File	248 KB

☰ 🖨

User Account Control



Do you want to allow this app to make changes to your device?



BigFix Client setup

Verified publisher: HCL America Inc.
File origin: Hard drive on this computer

[Show more details](#)

Yes

No

BigFix Client - InstallShield Wizard



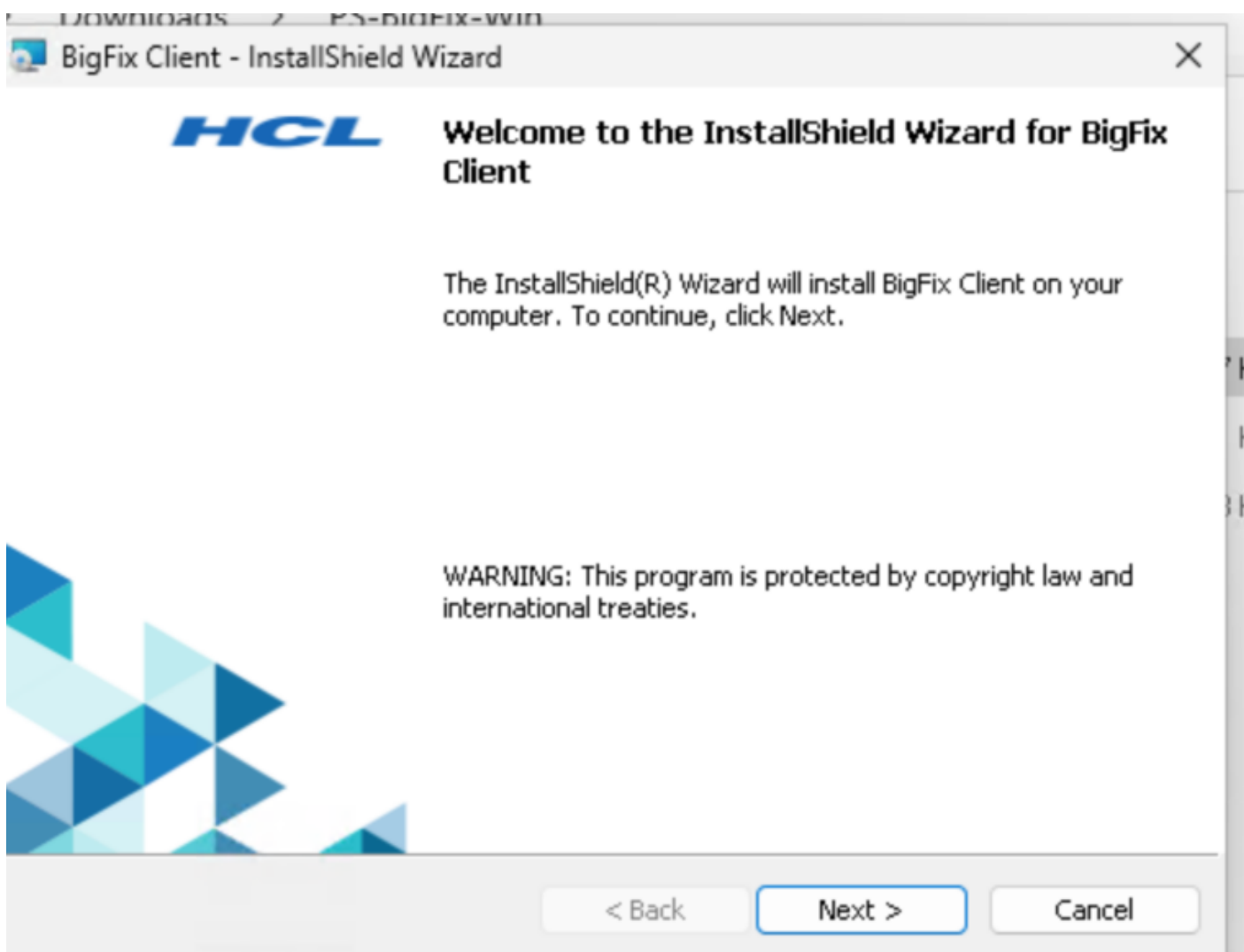
Select the language for the installation from the choices below.

English (United States)



OK

Cancel



Destination Folder

Click Next to install to this folder, or click Change to install to a different folder.



Install BigFix Client to:

C:\Program Files (x86)\BigFix Enterprise\BES Client\

Change...

InstallShield

< Back

Next >

Cancel



Ready to Install the Program

The wizard is ready to begin installation.



Click Install to begin the installation.

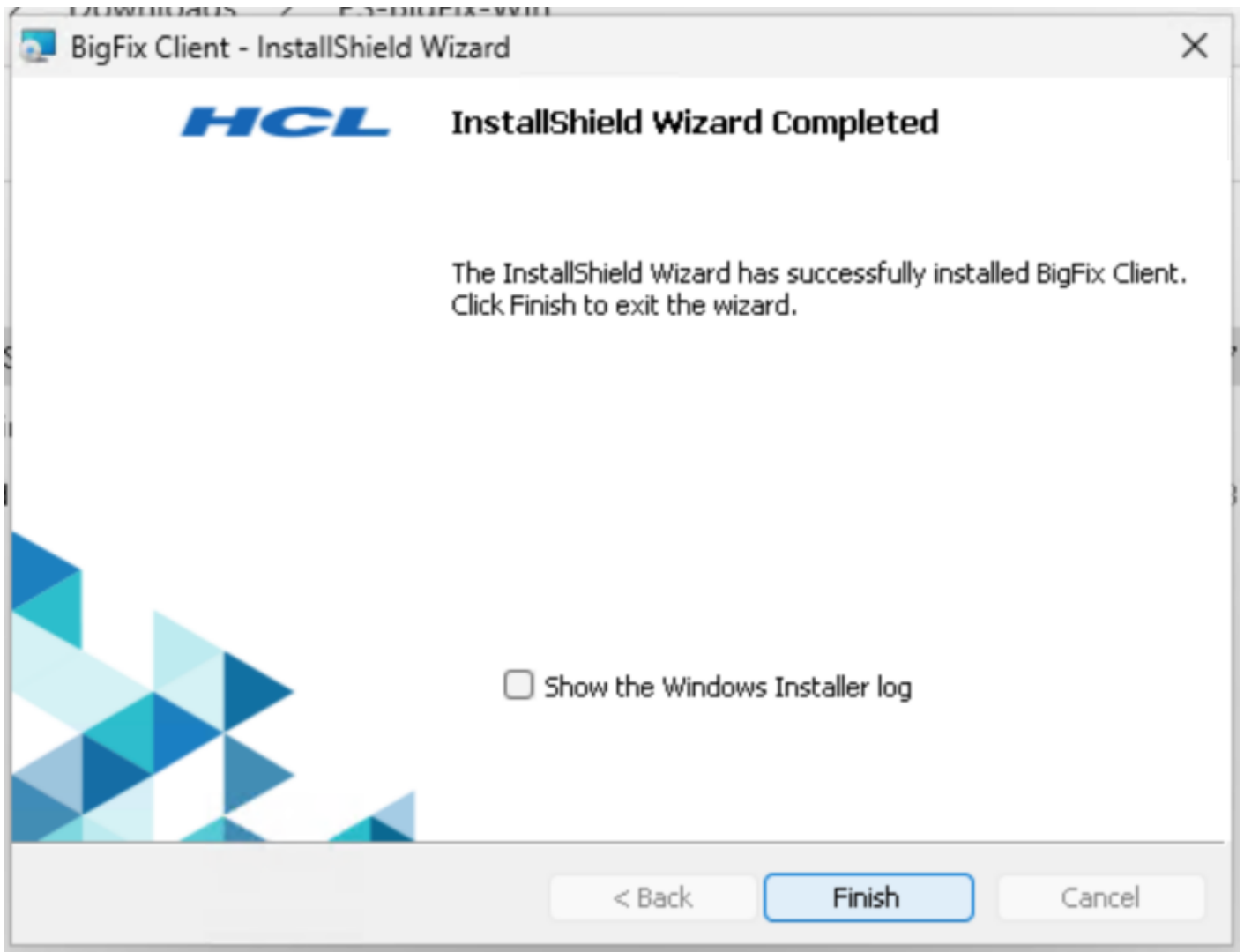
If you want to review or change any of your installation settings, click Back. Click Cancel to exit the wizard.

InstallShield

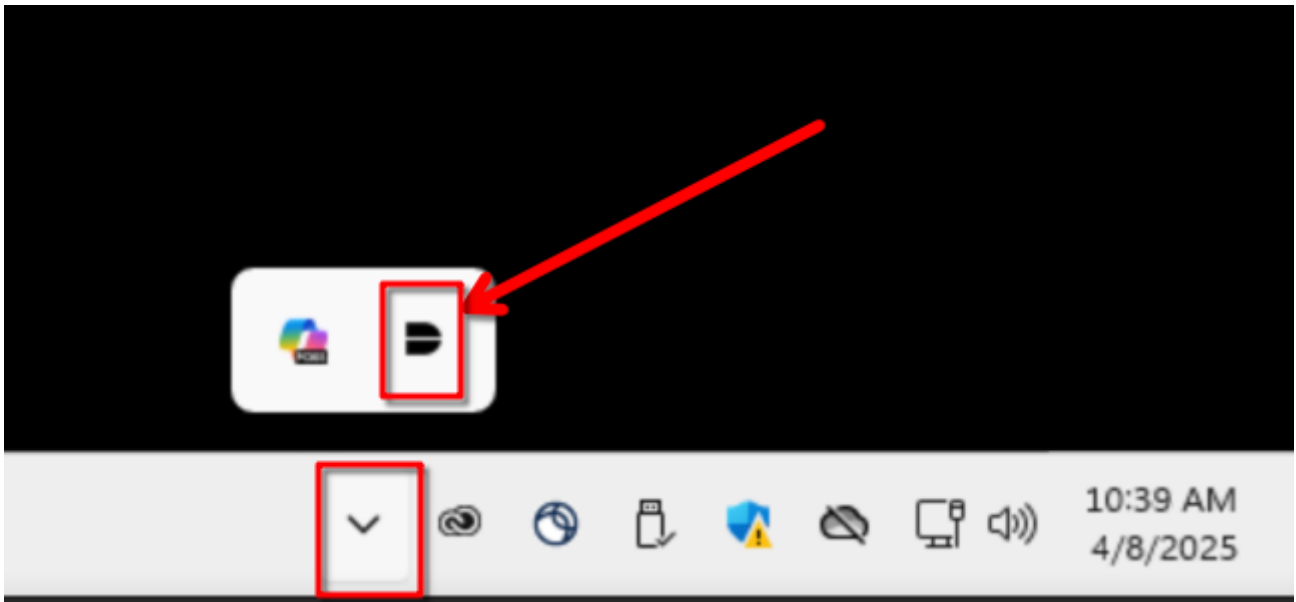
< Back

Install

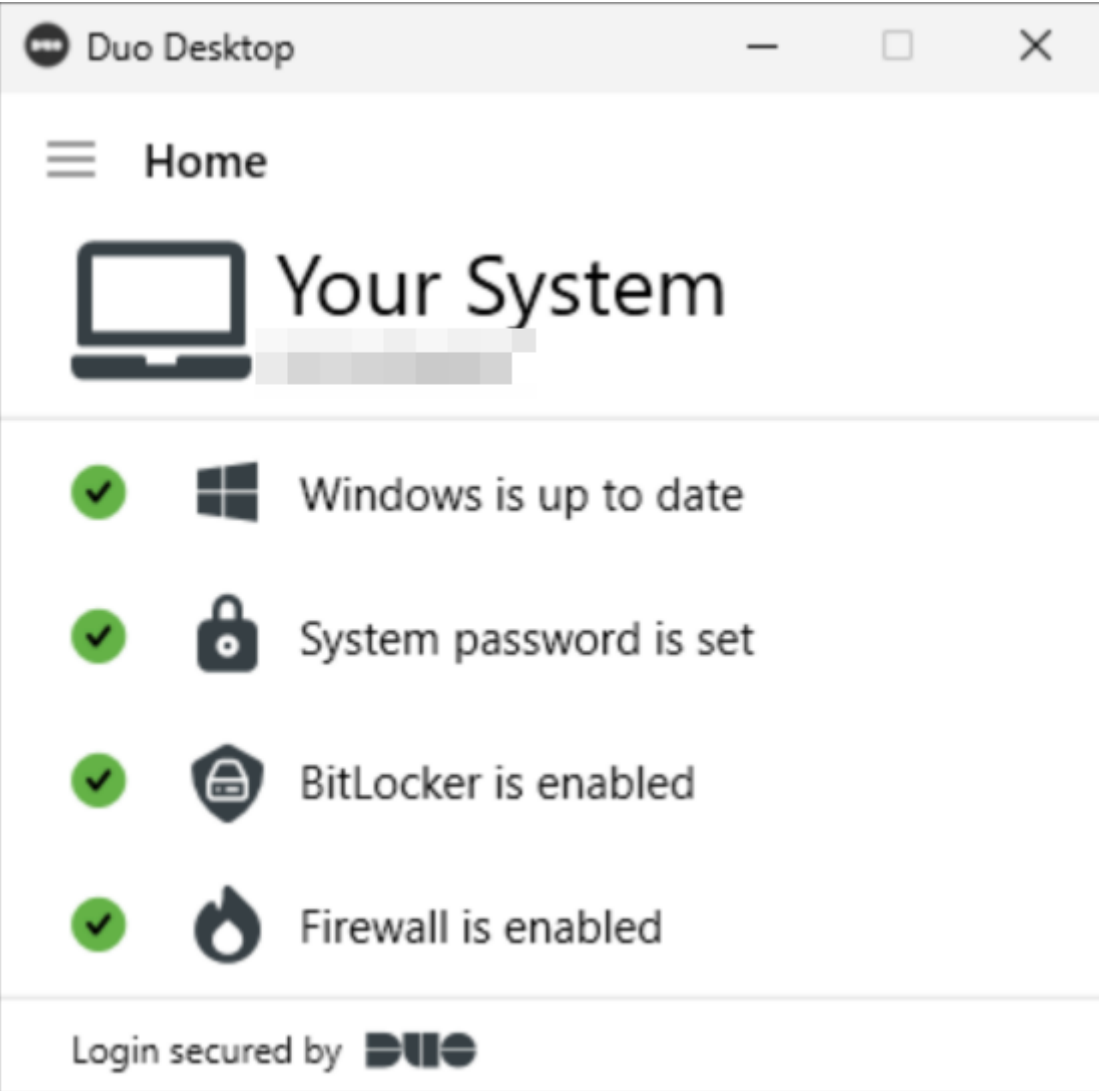
Cancel



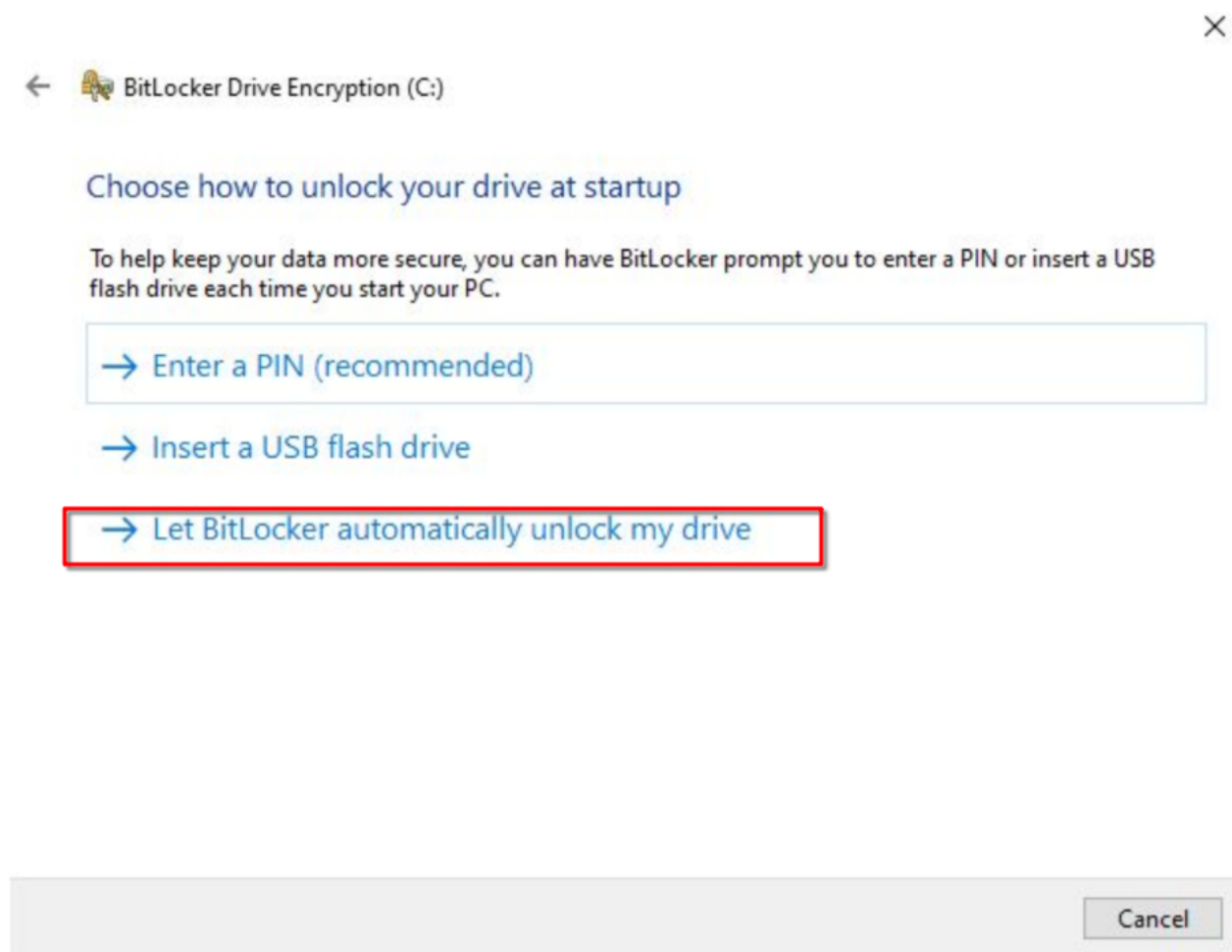
2. **Wait 5-10 minutes** for BigFix to install the required software. You will need to leave your computer on and connected to the internet for this step.
3. Check for the **Duo Desktop** icon in the task tray area. Once you see it, click on it to open Duo Desktop.



4. Duo Desktop will check for compliance, and will show you green check-marks for each requirement.



6. If you do not see a green check box for encryption, click on the message in Duo Desktop to go to BitLocker Settings, and turn it on. Choose "Let BitLocker automatically unlock my drive"





Choose how much of your drive to encrypt

If you're setting up BitLocker on a new drive or a new PC, you only need to encrypt the part of the drive that's currently being used. BitLocker encrypts new data automatically as you add it.

If you're enabling BitLocker on a PC or drive that's already in use, consider encrypting the entire drive. Encrypting the entire drive ensures that all data is protected—even data that you deleted but that might still contain retrievable info.

- ☐ Encrypt used disk space only (faster and best for new PCs and drives)
- ☒ Encrypt entire drive (slower but best for PCs and drives already in use)

Next

Cancel

NOTE: If you need to manually encrypt with BitLocker, choose "Save to AD account":



BitLocker Drive Encryption (C:)

How do you want to back up your recovery key?

A recovery key can be used to access your files and folders if you're having problems unlocking your PC. It's a good idea to have more than one and keep each in a safe place other than your PC.

→ Save to your Azure AD account

→ Save to a USB flash drive

→ Save to a file

→ Print the recovery key

[How can I find my recovery key later?](#)

Cancel

7. If any step is not green, click on it for instructions to remediate it, and if you are unable to remediate it on your own, please send an email to pshelpdesk@uci.edu to open a help ticket.

Revision #13

Created 8 April 2025 16:37:28 by David Rotter

Updated 21 April 2025 18:20:47 by David Rotter