

# Revvity Software

Chemoffice, Signals Notebook

- [Old Signals Notebook Installation Instructions](#)
- [How to Install Chemdraw Mac](#)
- [How to install ChemDraw for Windows](#)
- [New Revvity Software Installation Instructions](#)

# Old Signals Notebook Installation Instructions

## **Signals Notebook Individual Edition**

After you have installed ChemOffice, you may install **Signals Notebook**

1. Using either **Google Chrome** or **Mozilla Firefox**, go to <https://informatics.perkinelmer.com/sitesubscription/>
2. Search for the University of California - Irvine.
3. You will find the option to register our Cloud Applications -
  - Signals Notebook Individual Edition (available with ChemOffice+ Cloud)

Image not found or type unknown



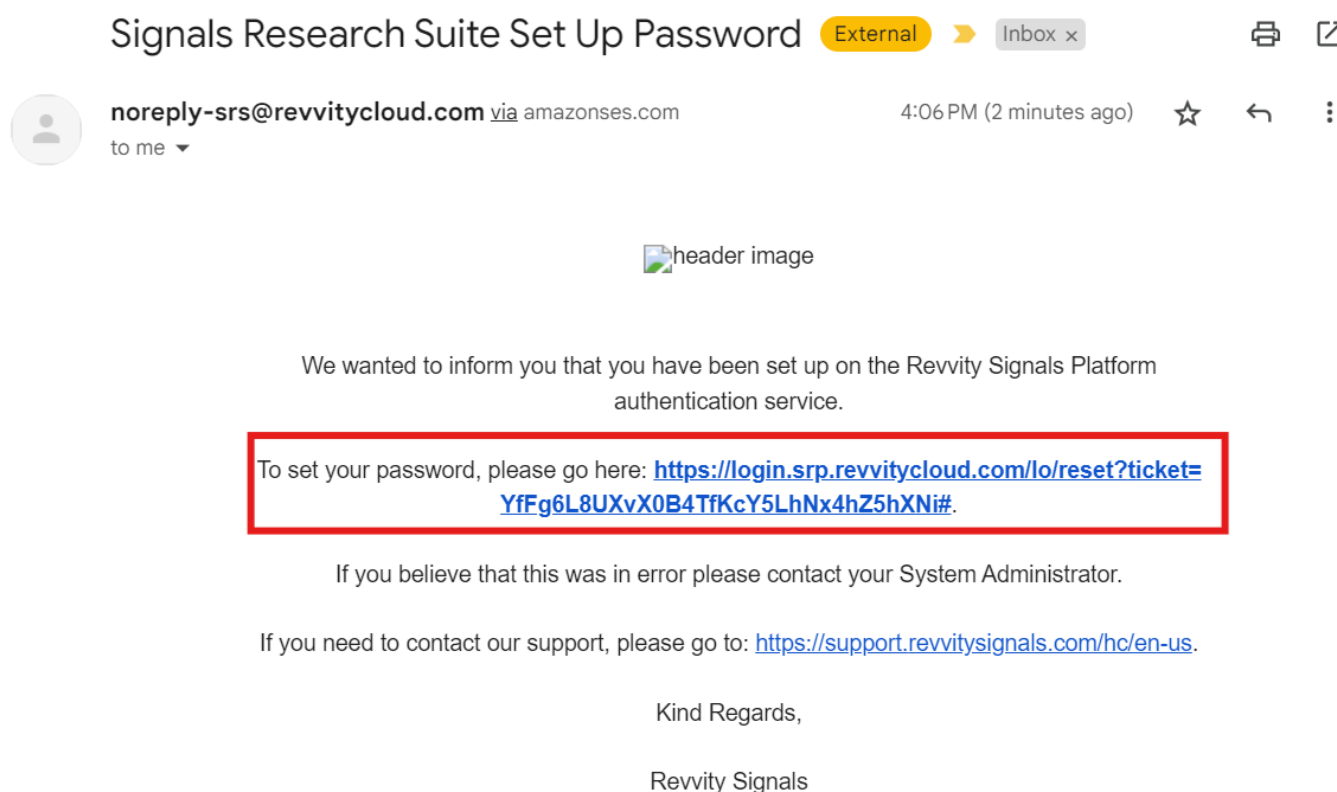
4. Sign in at the following page: <https://signalsnotebook.perkinelmer.cloud/>

# How to Install Chemdraw

## Mac

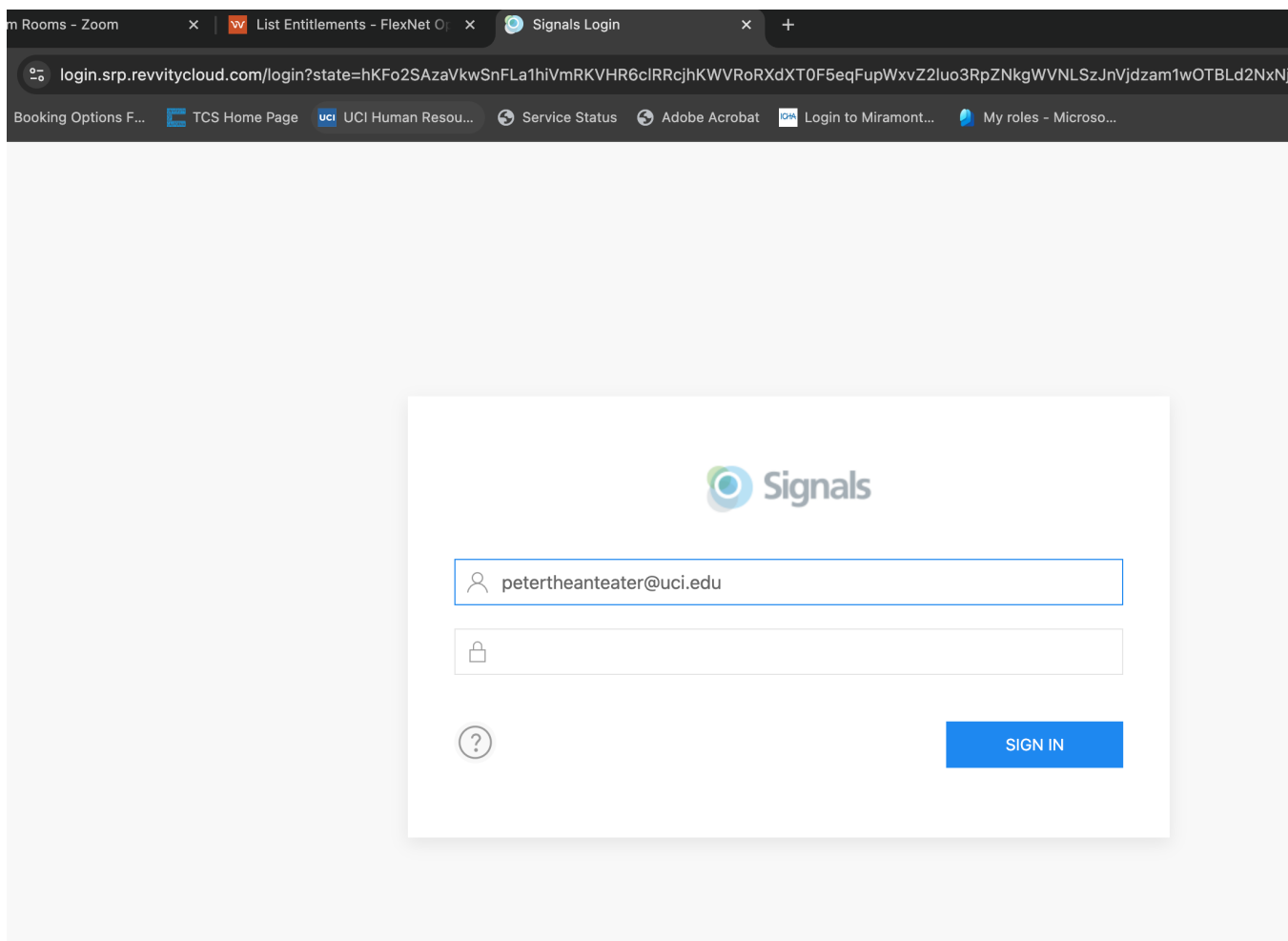
1. After you request the license via <https://ps.uci.edu/software/chemoffice> ->

<https://tools.ps.uci.edu/signals/>, you will receive two emails from Revvity: one welcoming email and one for the password reset. Please follow the link in the password reset email.

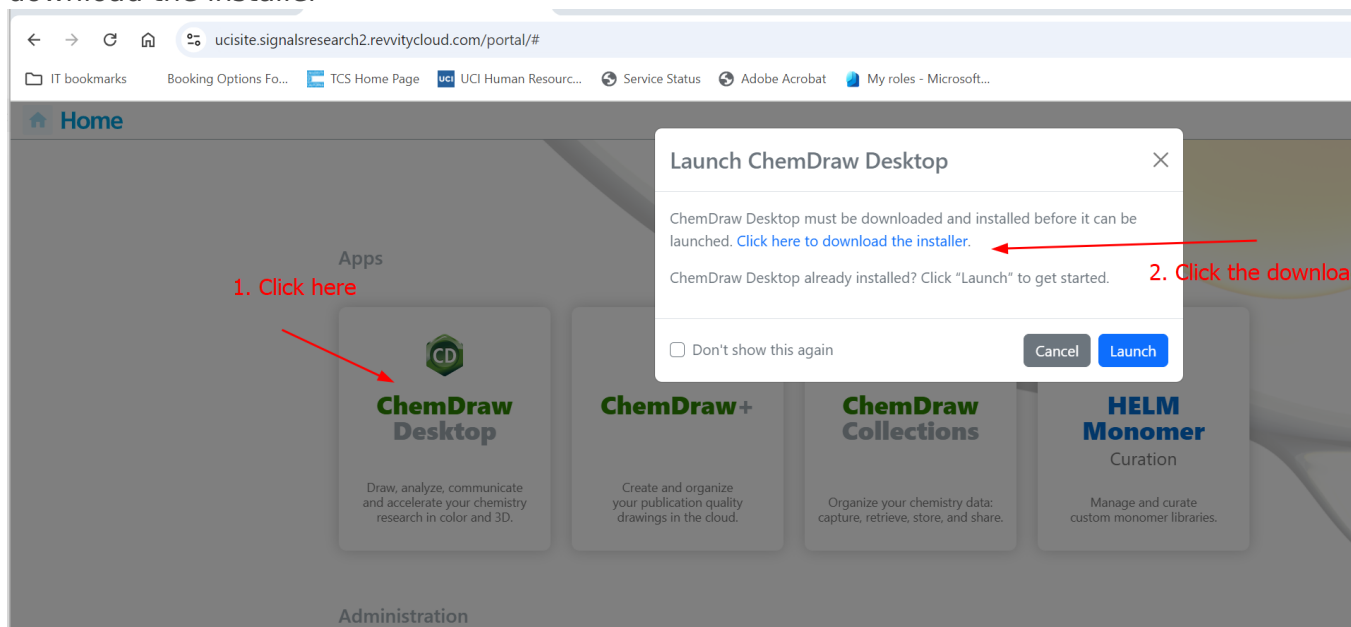


2. Go to <https://ucisite.signalsresearch2.revvitycloud.com> and sign in with your username (which is your [ucinetid@uci.edu](mailto:ucinetid@uci.edu) and your password from the previous step)

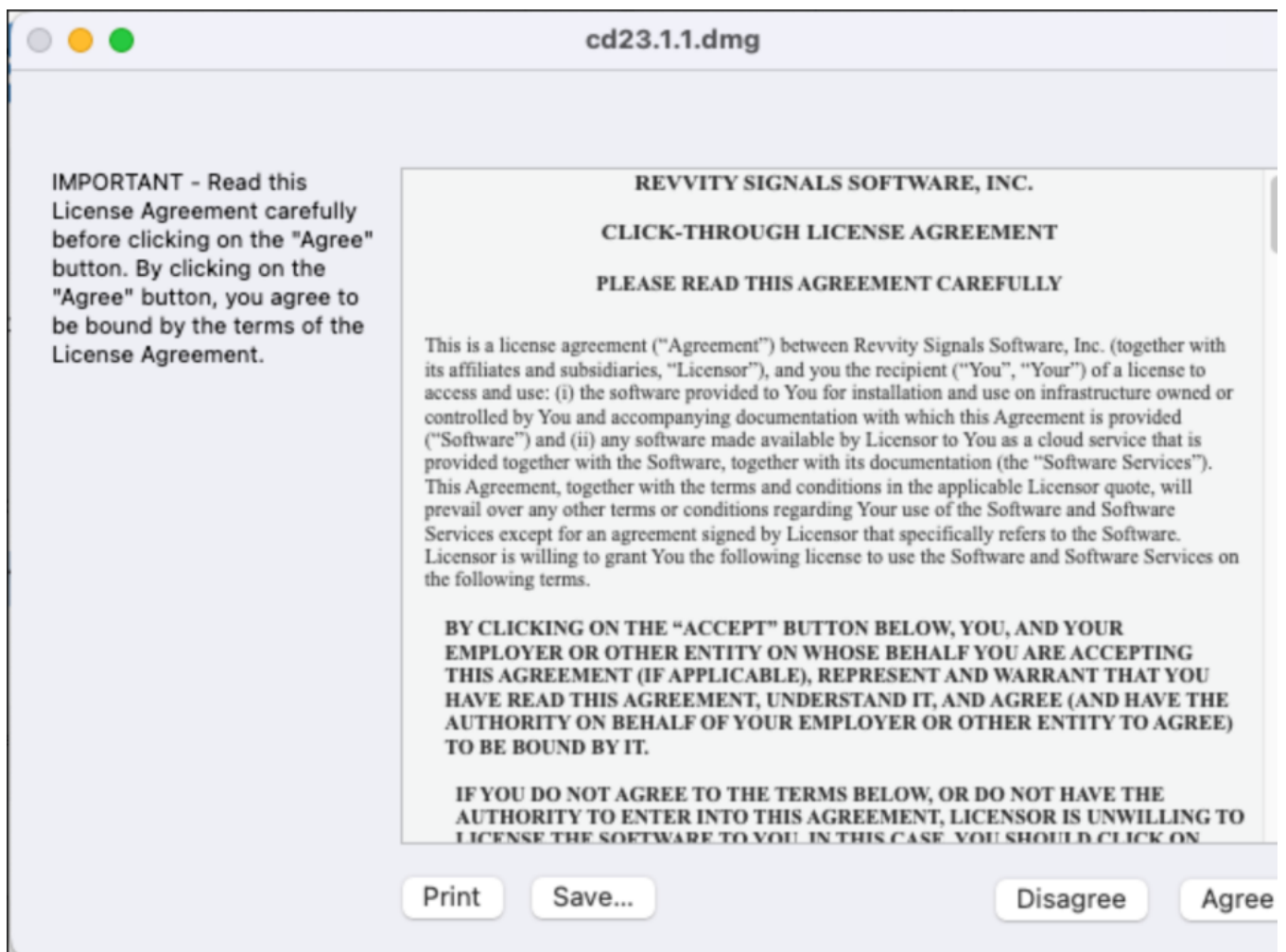
**NOTE: If you did not get the email from step 1 in 5-10 minutes, click on the ? icon at the sign-in page to reset your password.**



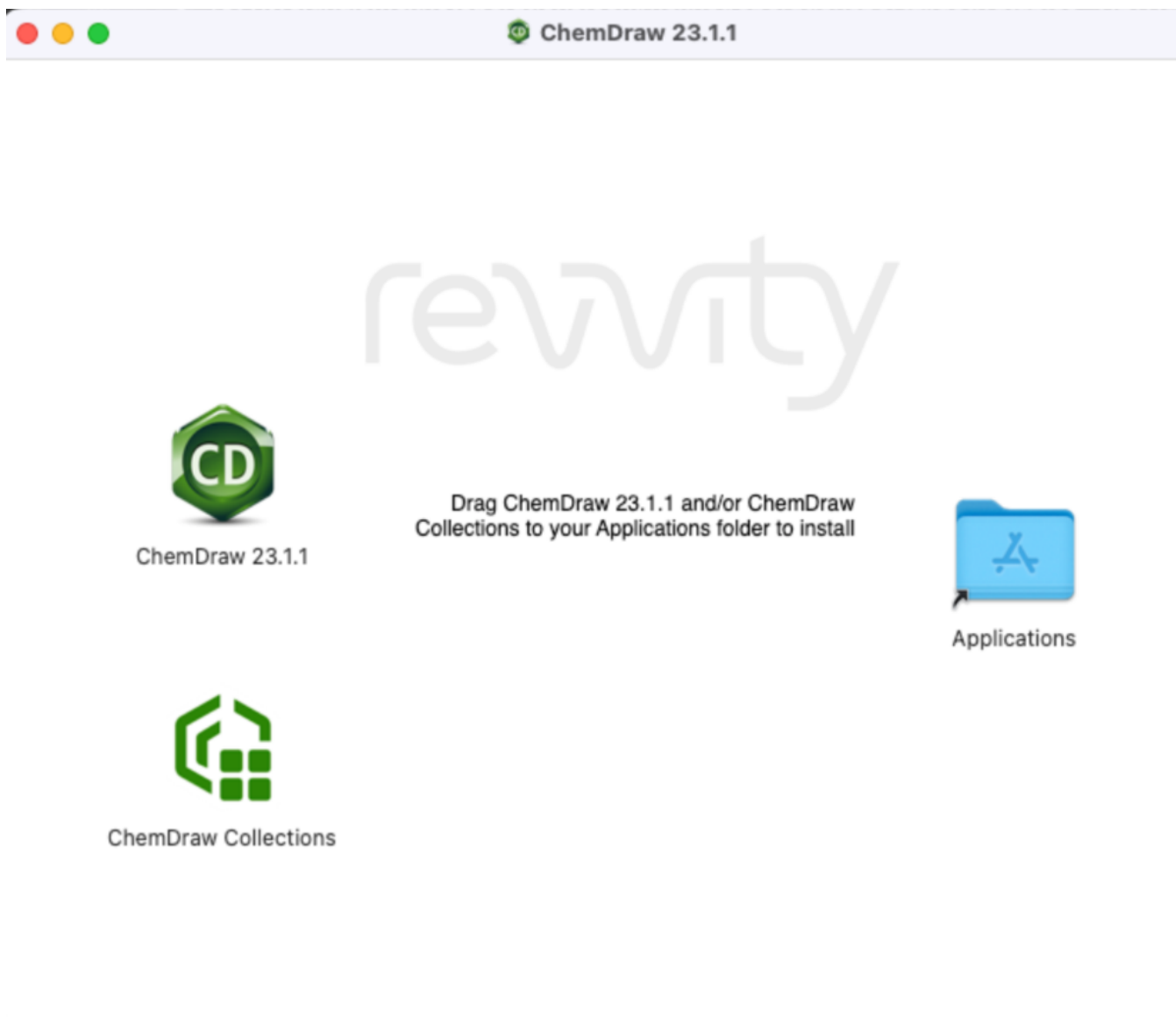
- Click "ChemDraw Desktop" on the product, on the pop up windows, click on "Click here to download the installer"



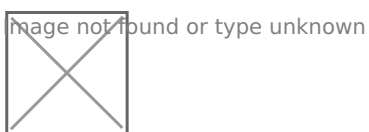
- Download the software  
it will download cd2x. xx. xx. dmg file.
- Double-click the dmg file you downloaded



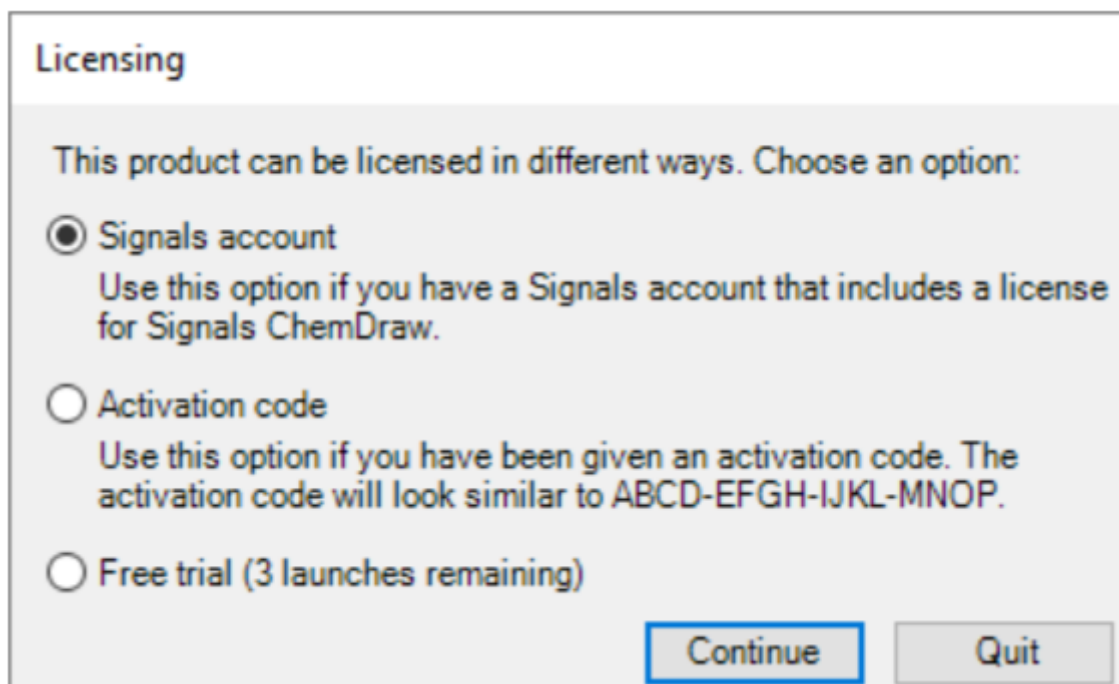
6. \ Follow the instruction on this pop-up window. (move the icons from the left to right)



7. Go to “Applications” folder and double-click on ChemDraw Professional to launch the application



You need to choose "signals account", and it will take you to Revvity sign in page.



7. Enter this URL in the following pop-up window  
<https://ucisite.signalsresearch2.revvitycloud.com>

8. Click "Install"

Image not found or type unknown



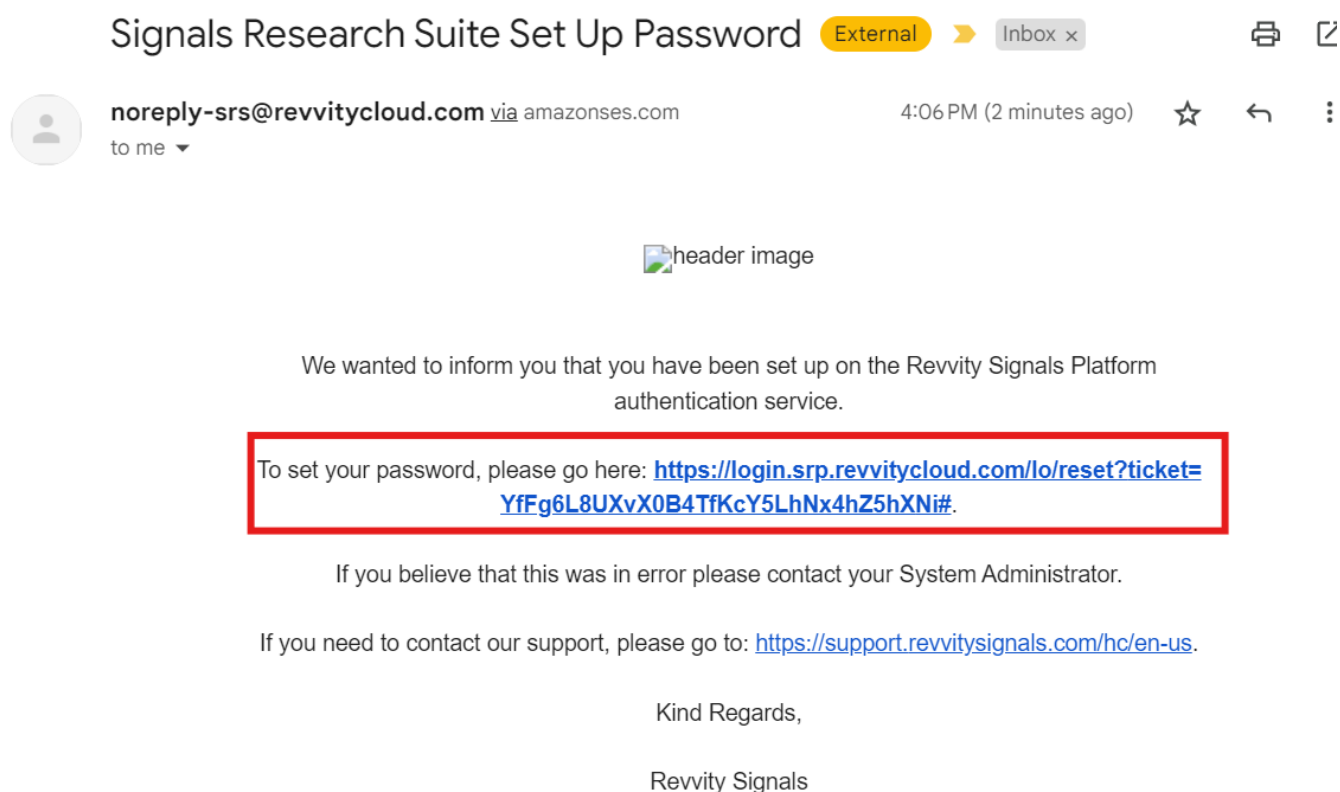
9. Go to "Applications" folder or "Lauchpad" to find the "ChemDraw Professional". Click to launch the application.



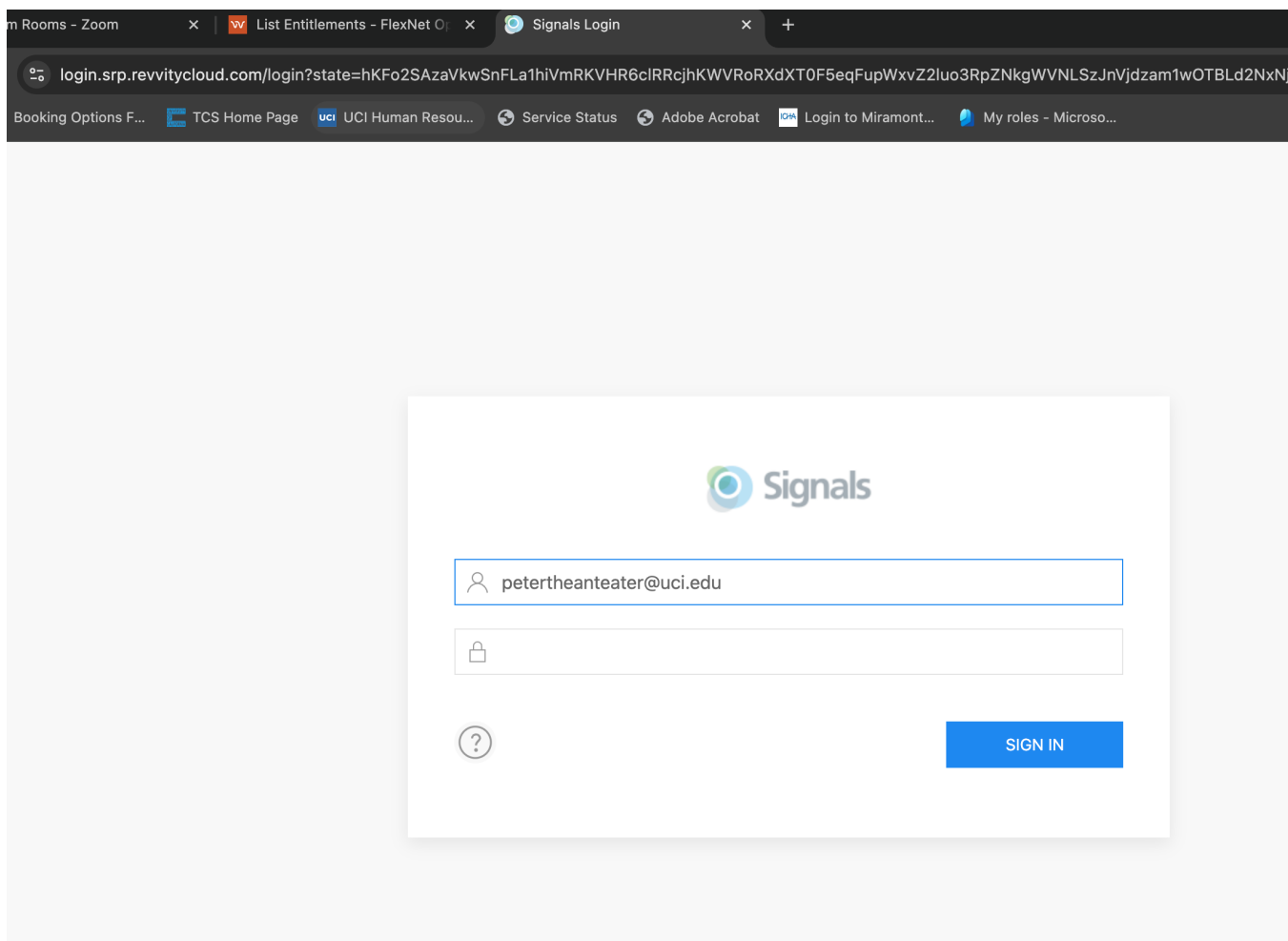
# How to install ChemDraw for Windows

1. After you request the license via <https://ps.uci.edu/software/chemoffice> ->

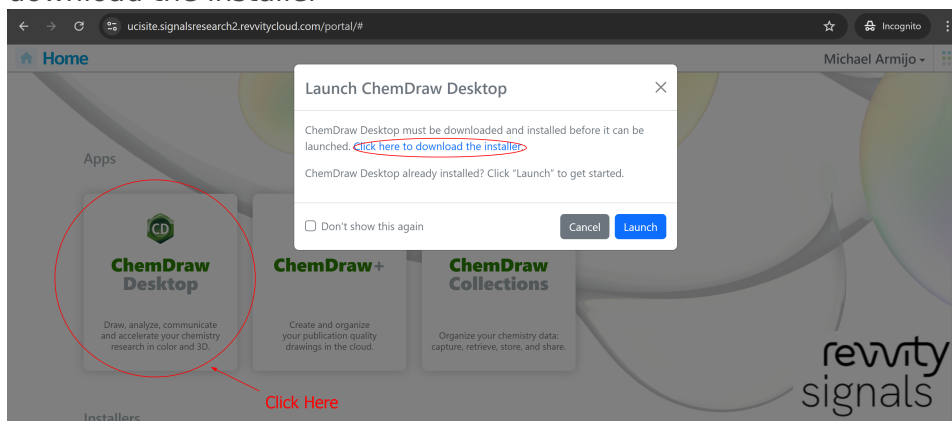
<https://tools.ps.uci.edu/signals/>, you will receive two emails from Revvity: one welcoming email and one for the password reset. Please follow the link in the password reset email.



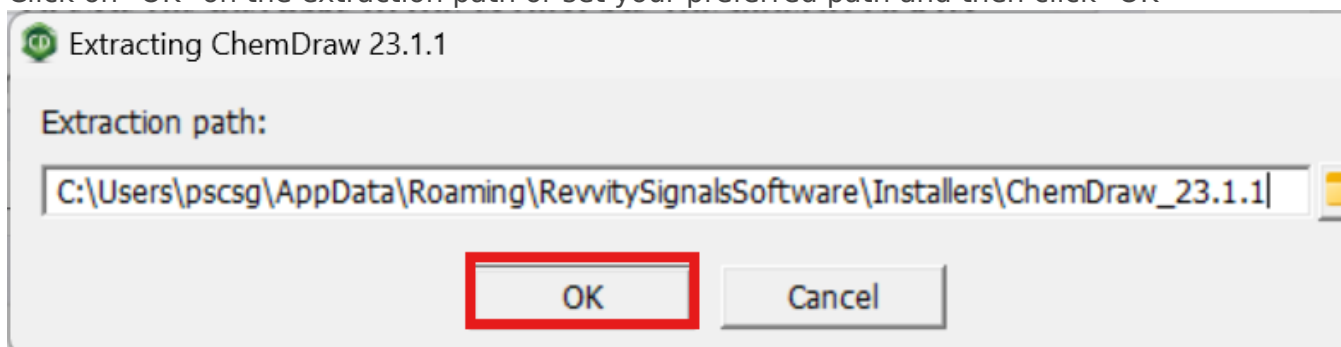
2. Go to <https://ucisite.signalsresearch2.revvitycloud.com> and sign in with your username (which is your [ucinetid@uci.edu](mailto:ucinetid@uci.edu) and your password from the previous step) **NOTE: If you did not get the email from step 1 in 5-10 minutes, click on the ? icon at the sign-in page to reset your password.**



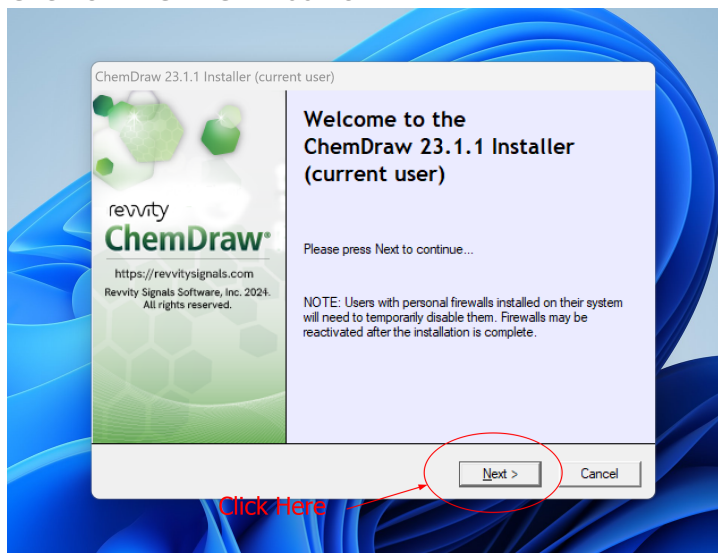
- Click "ChemDraw Desktop" on the product, on the pop up windows, click on "Click here to download the installer"



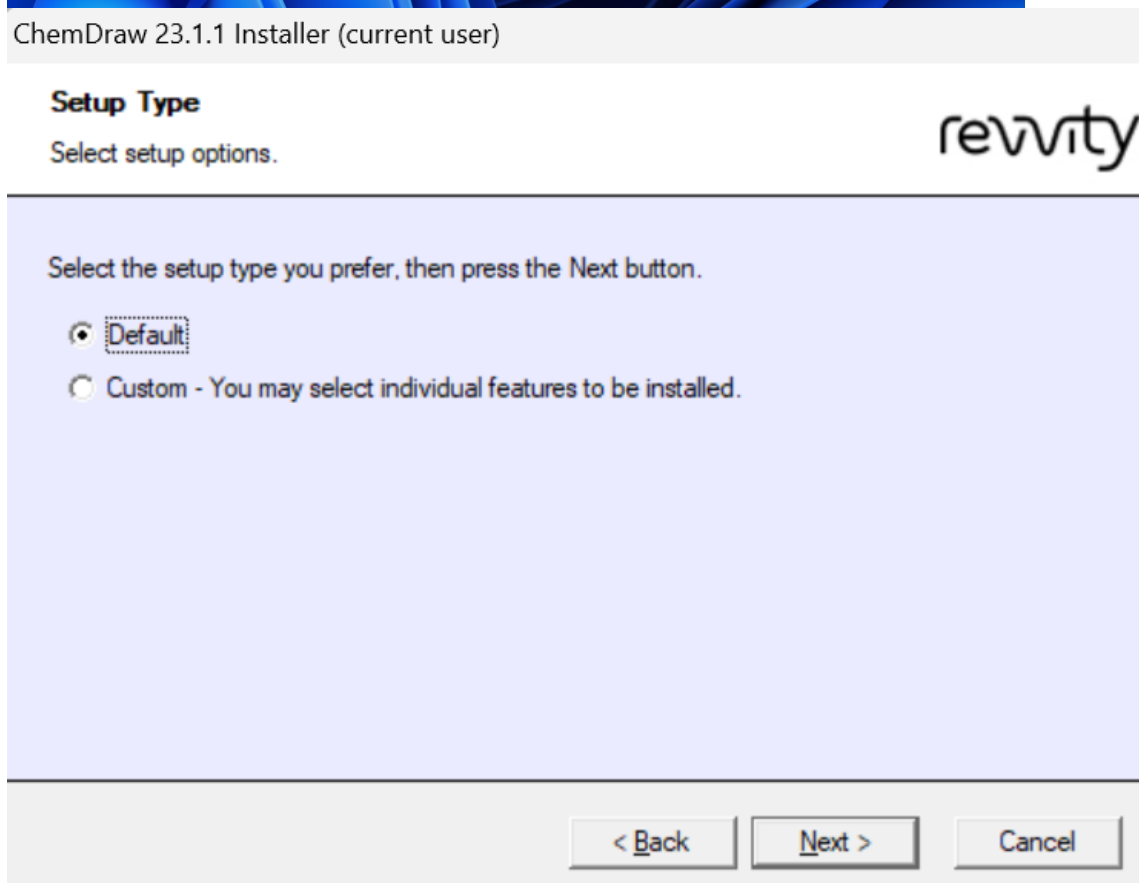
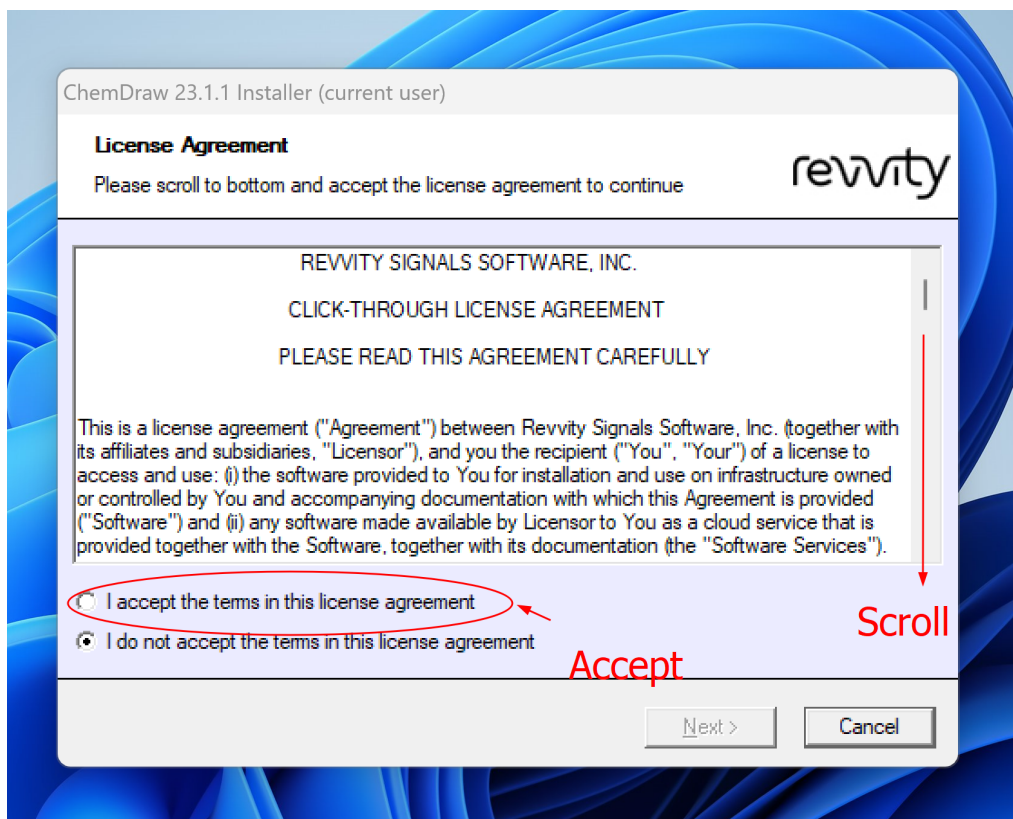
- Download the software
  - It should be called something similar to "ChemDraw\_xx.x.x.exe"
- Double click on the file you downloaded
- Click on "OK" on the extraction path or set your preferred path and then click "OK"



7. Click on the "Next" button



8. Read and Accept the "License Agreement"



ChemDraw 23.1.1 Installer (current user)

**Select Features**

Select features to install.

revvity

☒ ChemDraw 23.1.1 64-bit (Required)

☒ ChemDraw Collections

< Back

Next >

Cancel

ChemDraw 23.1.1 Installer (current user)



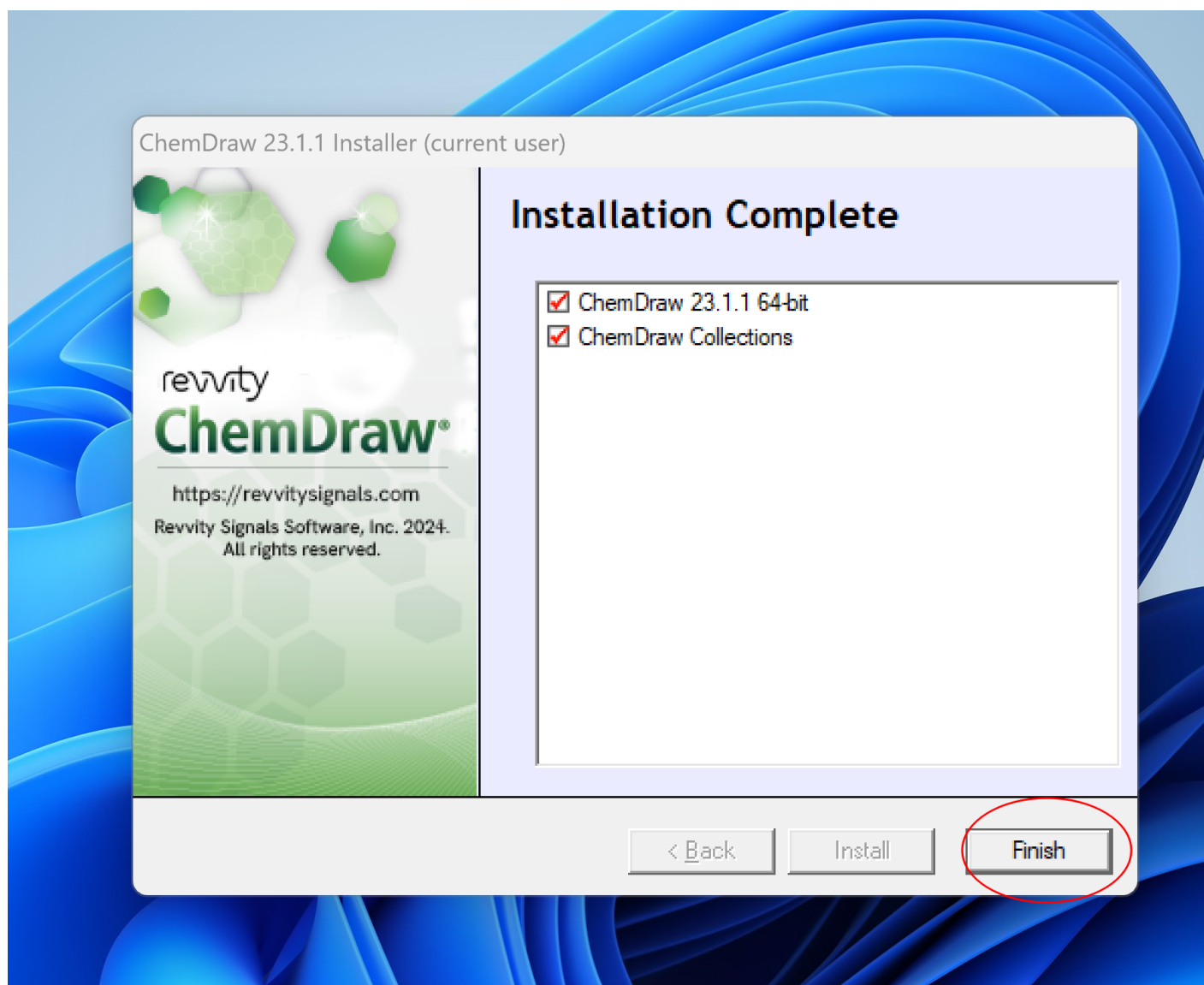
## Ready to Install

ChemDraw 23.1.1 64-bit  
ChemDraw Collections

< Back

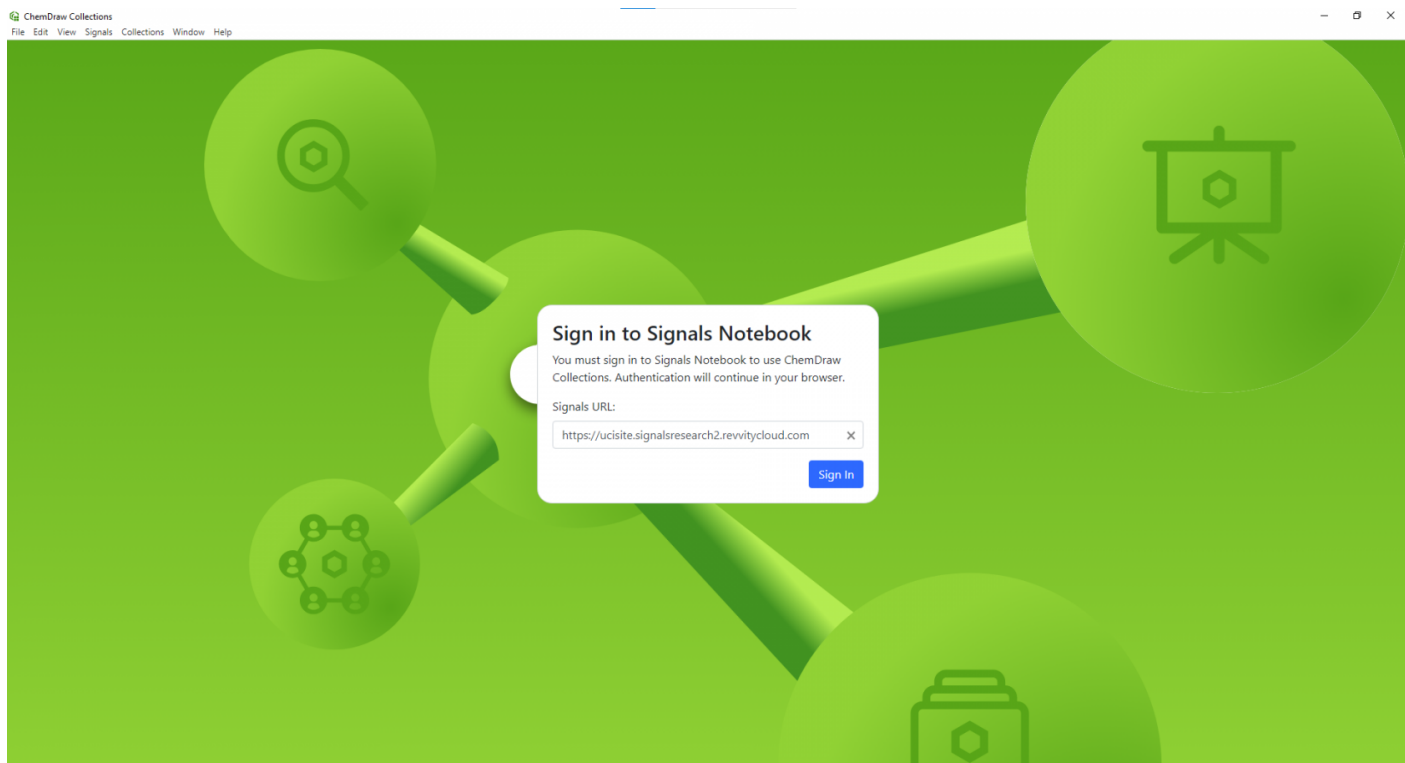
Install

Cancel



9. Go to "Desktop" and double-click on ChemDraw Collection to launch the application

Enter this URL <https://ucisite.signalsresearch2.revvitycloud.com> and click sign in which will bring you to the pop-up login window.



10. Sign in with the account you created in the first step. Once you click "sign in", a pop-up window will appear and click "open ChemDraw Collection" and you're all set!





SIGN IN

# New Revvity Software Installation Instructions

## 1. New ChemDraw/Notebook License Request

To request a license for the current ChemDraw or Signals Notebook:

1. Visit <https://tools.ps.uci.edu/signals/>
2. Sign in with UCI login
3. Click "Individual Request"
4. Choose ChemDraw, Notebook, or both and submit the form.

## 2. ChemDraw/Notebook Installation Instructions

### **Mac ChemDraw individual installation**

[How to Install](#)

### **Windows ChemOffice individual installation**

[How to Install](#)