

# Windows 10

1. Request an IP Address from Physical Sciences Computing Support. Please email [pshelpdesk@uci.edu](mailto:pshelpdesk@uci.edu) to submit your request.
2. On the reply email, you should receive some information regarding the IP Address, Subnet Mask, Default Gateway, and DNS servers. For some occasions, network jack/port information is also included. The IP addresses should generally be in this format, although the first 2 octets may differ sometimes:  
**128.200.XXX.XXX**
3. With this information in hand, sign in to your Windows 10 machine, and open "Network Status" from Windows Settings, or by typing it into the Start Menu search box.

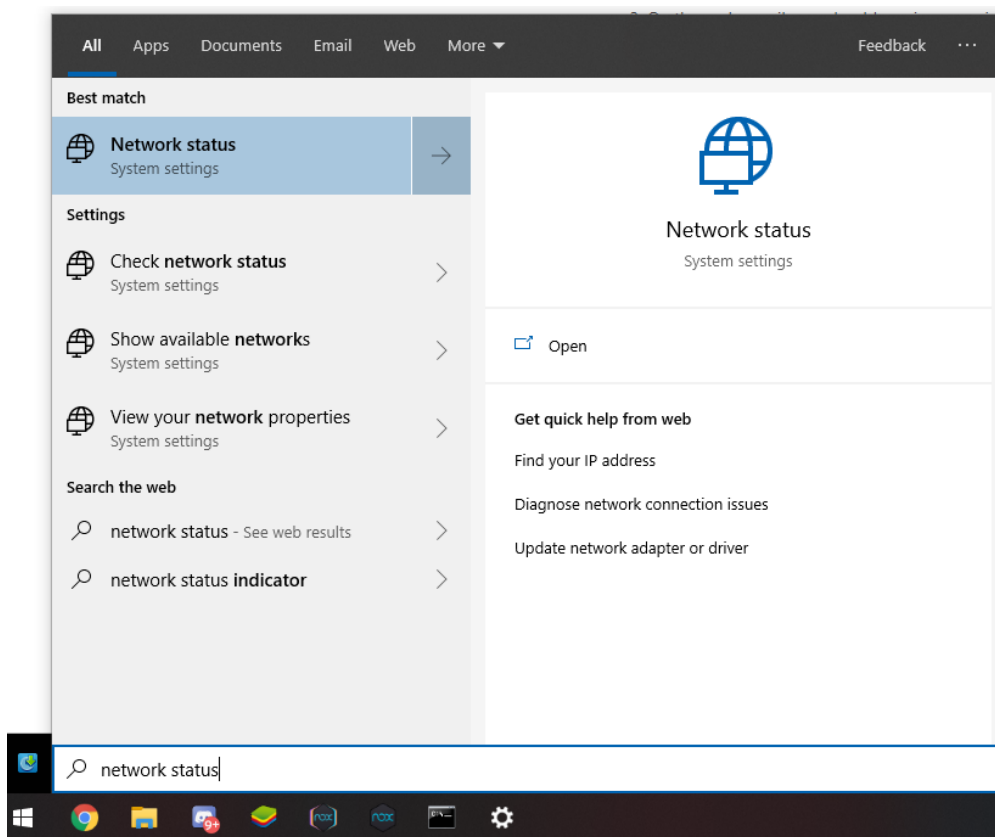
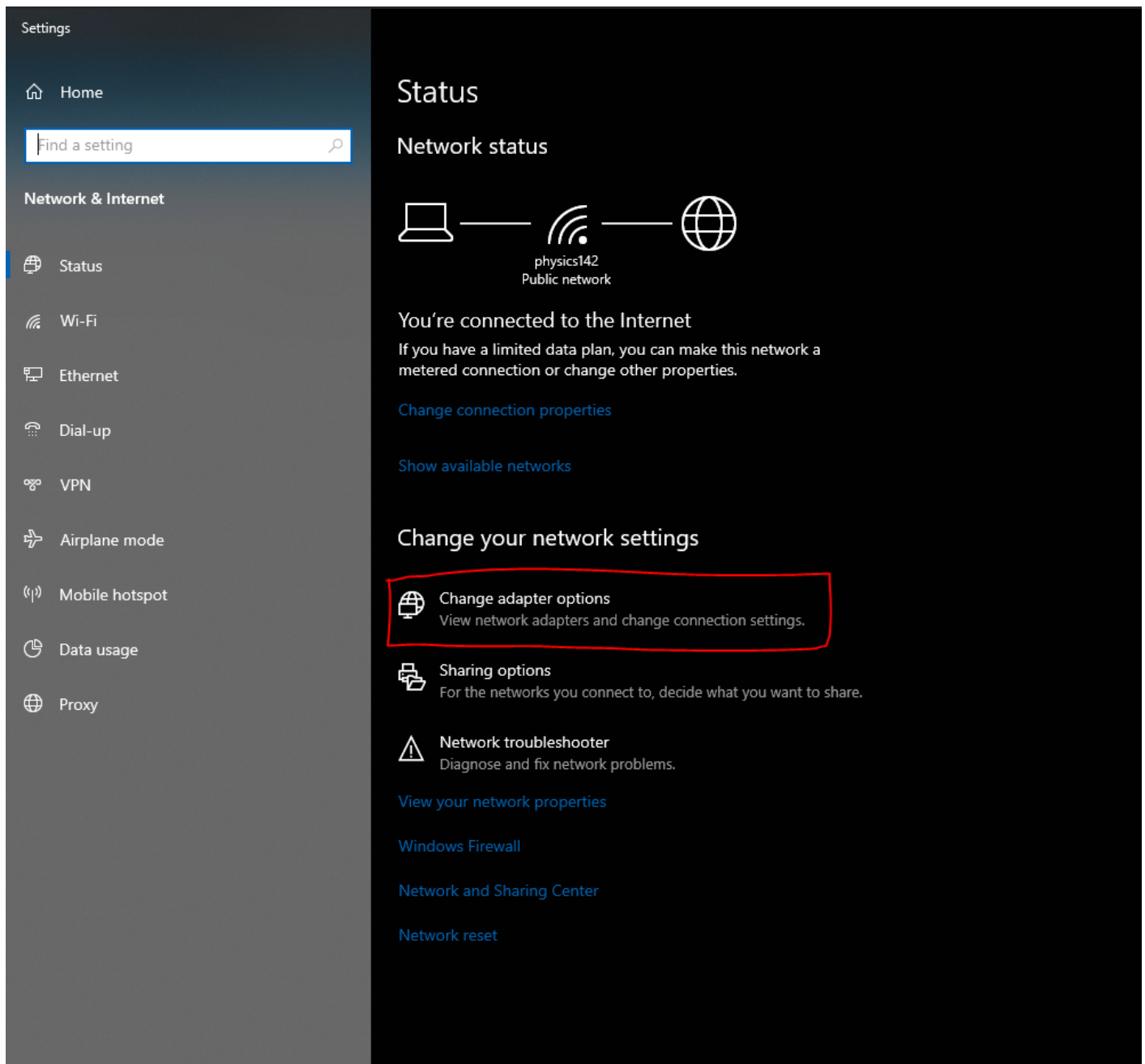


Figure 1: Start Menu Search Results

4. Upon opening "Network Status", click on "Change Adapter Options", outlined in the red box shown below.



Revision #4

Created 17 July 2019 21:29:41

Updated 8 May 2023 15:56:16 by David Rotter